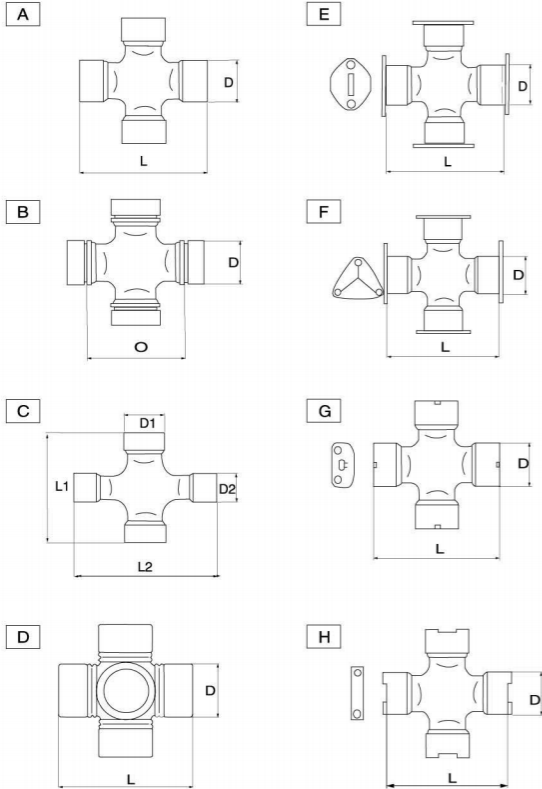


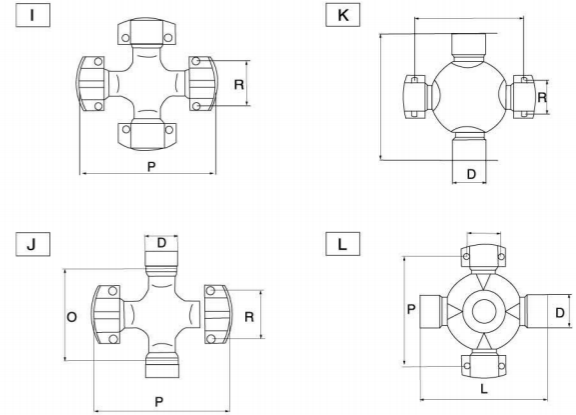
# COMMERCIAL VEHICLE UNIVERSAL JOINT SERIES



MEASURING SYSTEM FOR UNIVERSAL JOINT KITS.

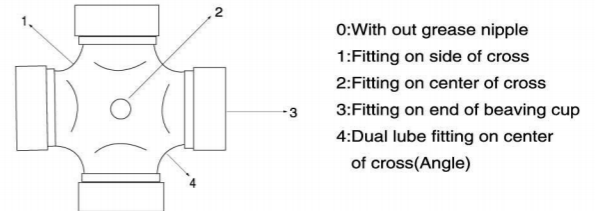


MEASURING SYSTEM FOR UNIVERSAL JOINT KITS.



D: Bearing diameter / O: Inside snapping / L: Outside snapping / P: Centering / R: Bolt pitch

LUBRICATION POINTS







IDENTIFICATION

DAIHATSU

Table with columns: SORL No., FIG, ORIGINAL No., GMB No., KOYO No., MATSUBA No., D m/m, O m/m, L m/m. Rows include 3404 0020 06 0, 3404 0021 43 0, 3404 0020 07 0, etc.

HINO

Table with columns: SORL No., FIG, ORIGINAL No., GMB No., KOYO No., MATSUBA No., D m/m, O m/m, L m/m. Rows include 3404 0030 01 0, 3404 0030 02 0, 3404 0021 49 0, etc.

HONDA

Table with columns: SORL No., FIG, ORIGINAL No., GMB No., KOYO No., MATSUBA No., D m/m, O m/m, L m/m. Rows include 3404 0020 09 0, 3404 0017 17 0.

SUZUKI

Table with columns: SORL No., FIG, ORIGINAL No., GMB No., KOYO No., MATSUBA No., D m/m, O m/m, L m/m. Rows include 3404 0026 13 0, 3404 0025 13 0, 3404 0028 12 0, etc.

SUBARU

Table with columns: SORL No., FIG, ORIGINAL No., GMB No., KOYO No., MATSUBA No., D m/m, O m/m, L m/m. Rows include 3404 0022 11 0, 3404 0023 10 0, 3404 0025 14 0.

OTHERS

Table with columns: SORL No., FIG, ORIGINAL No., GMB No., KOYO No., MATSUBA No., D m/m, O m/m, L m/m. Rows include 3404 0021 47 0, 3404 0019 02 0, 3404 0021 48 0, etc.

IDENTIFICATION

STEERING JOINT

Table with columns: SORL No., FIG, ORIGINAL No., GMB No., KOYO No., MATSUBA No., D m/m, O m/m, L m/m. Rows include 3404 0028 14 0, 3404 0028 15 0, 3404 0028 16 0, etc.

KOMATSU

Table with columns: SORL No., FIG, ORIGINAL No., KOYO NO, D m/m, O m/m, L m/m, R m/m, P m/m. Rows include 3404 0040 01 0, 3404 0040 03 0, 3404 0040 04 0, etc.

TCM

Table with columns: SORL No., FIG, ORIGINAL No., KOYO NO, D m/m, O m/m, L m/m, R m/m, P m/m. Rows include 3404 0046 01 0, 3404 0046 02 0, 3404 0046 03 0, etc.



www.sorl.cn

FOR U.S. AND EUROPEAN VEHICLES IDENTIFICATION

Table with 9 columns: SORL No., FIG, GMB.No., D m/m, O m/m, L m/m, R m/m, P m/m. Rows list various vehicle models and their dimensions.



www.sorl.cn

FOR U.S. AND EUROPEAN VEHICLES IDENTIFICATION

Table with 9 columns: SORL No., FIG, GMB.No., D m/m, O m/m, L m/m, R m/m, P m/m. Rows list various vehicle models and their dimensions.



www.sorl.cn

FOR U.S. AND EUROPEAN VEHICLES IDENTIFICATION

Table with 7 columns: SORL No., SPICER No., D m/m, O m/m, L m/m, R m/m, P m/m. Rows list vehicle specifications for various models.



www.sorl.cn

FOR U.S. AND EUROPEAN VEHICLES IDENTIFICATION

Table with 7 columns: SORL No., SPICER No., D m/m, O m/m, L m/m, R m/m, P m/m. Rows list vehicle specifications for various models.



www.sorl.cn

FOR U.S. AND EUROPEAN VEHICLES IDENTIFICATION

Table with 7 columns: SORL No., SPICER No., D m/m, O m/m, L m/m, R m/m, P m/m. Rows list various vehicle models and their dimensions.



www.sorl.cn

FOR U.S. AND EUROPEAN VEHICLES IDENTIFICATION

Table with 7 columns: SORL No., SPICER No., D m/m, O m/m, L m/m, R m/m, P m/m. Rows list various vehicle models and their dimensions.

FOR U.S. AND EUROPEAN VEHICLES IDENTIFICATION

Table with 7 columns: SORL No., PRECISION, SPICER, AEC, GMB, ALLOY, LOBRO. Rows list various vehicle models and their specifications.



www.sorl.cn

FOR U.S. AND EUROPEAN VEHICLES IDENTIFICATION

Table with 7 columns: SORL No., PRECISION, SPICER, AEC, GMB, ALLOY, LOBRO. Rows list various vehicle identification codes and their corresponding specifications.



www.sorl.cn

FOR U.S. AND EUROPEAN VEHICLES IDENTIFICATION

Table with 7 columns: SORL No., PRECISION, SPICER, AEC, GMB, ALLOY, LOBRO. Rows list various vehicle identification codes and their corresponding specifications.



## FOR U.S. AND EUROPEAN VEHICLES IDENTIFICATION

SORL No.	PRECISION	SPICER	AEC	GMB	ALLOY	LOBRO
3404 0048 29 0	385	6-1514X	1623	GUMZ-10		1022
3404 0048 30 0	383	6-1515X		GUIS-52		1043
3404 0048 31 0	399	6-1516X	1625	GUM-88		1016
3404 0048 32 0	951	6-2002X	2103	G5-2002X		
3404 0048 33 0	507/515	6-2011X	2127/2112	GU-6200	1071	U-620
3404 0048 34 0	508/516	6-2031X	2111/2127	G5-2031X		
3404 0048 35 0	522/519	6-2033X	2114	G5-2033X		
3404 0048 36 0	952	6-2116X	2116	G5-2116X		1063
3404 0048 37 0	505	6-2140X	2140	G5-2140X		1066
3404 0048 38 0	498	6-2173X	2173	G5-2173X		1067
3404 0048 39 0	491	6-2530X	2518			1079
3404 0048 41 0	513	6-2532X	2500			1077
3404 0048 42 0	377	6-2871X	2871			1761
3404 0048 43 0	536/530	6-3000X	3118/3100	G5-3000X		1711
3404 0048 44 0	496	6-3008X	3188			1085
3404 0048 45 0	492	6-3011X	534G/3105			1014
3404 0048 46 0	535	6-3014X	3101			1704
3404 0048 47 0	372	6-3022X	356			1699
3404 0048 48 0	534G	6-3147X	3105	GUID-85		1014
3404 0048 50 0	540	6-4002X	4110	G5-4002X		1703
3404 0048 51 0	545	6-4015X				
3404 0048 52 0	546/494	6-4016X		114-4109		
3404 0048 54 0	541	6-4123X	4101/4103			1704
3404 0048 55 0	928	6-4140X				14130
3404 0048 56 0	969	6-4143X	4113			1689
3404 0048 57 0	550	6-5000X	5100	G5-5000X		1720
3404 0048 58 0		6-5008X		GU-6550		U-655
3404 0048 59 0	552	6-5121X	5101	G5-5121X		1721
3404 0048 60 0		6-5154X				
3404 0048 61 0	933	6-5173X	5102			1722
3404 0048 62 0	968	6-5177X	5108	G5-5177X		1728
3404 0048 63 0	894	6-5800X	56WB			1878
3404 0048 64 0	895	6-5801X	56WB1			1876
3404 0048 65 0	896	6-5802X	56WB2			1877
3404 0048 66 0	560	6-6000X	6100	GU-6600		U-660
3404 0048 67 0	563	6-6102X	6102	G5-6102X		1822
3404 0048 68 0	905	6-6106X	6108	G5-6106X		1826
3404 0048 69 0	568	6-6108X				1828
3404 0048 70 0	599	6-6109X	6109			1829
3404 0048 71 0	570	6-7000X	7100/7200	GUIS-60		1841
3404 0048 72 0		6-7005X		GU-6720		U-672
3404 0048 73 0	927	6-7105X	7105	G5-7105X		1840
3404 0048 74 0	927	6-7150X	7105			1840
3404 0048 75 0	574	6-7202X	7102	G5-7206X		1843
3404 0048 76 0	572	6-7260X	7101			
3404 0048 77 0	928	6-8105X	8105			1805
3404 0048 78 0	581	6-8200X		G5-8200X		1851
3404 0048 79 0	582	6-8201X				
3404 0048 80 0	584	6-8203X				1854
3404 0048 81 0	785/963	6-8500X		G5-2140X		

## FOR U.S. AND EUROPEAN VEHICLES IDENTIFICATION

SORL No.	PRECISION	SPICER	AEC	GMB	ALLOY	LOBRO
3404 0048 82 0	963	5-8516X		G5-8502X		
3404 0048 83 0	911	6-9001X	9031			1868
3404 0048 84 0	729	6-9002X		G5-9017X		1865
3404 0048 85 0	911	5-8016X	9031			1868
3404 0048 86 0		5-12062X				
3404 0048 87 0		5-12100X		GU-7530		U-753
3404 0048 88 0		5-12213X		GU-7300		U-730
3404 0048 89 0		5-12219				U-762
3404 0048 92 0		5-12276X				
3404 0048 93 0		5-12278X				U-756
3404 0048 94 0		5-12924X		GU-7560		U-763
3404 0048 95 0		5-12932X		GU-7630		
3404 0048 96 0	341	6-13400X	511/514			

## FOR U.S. AND EUROPEAN VEHICLES IDENTIFICATION

SORL No.	D m/m	O m/m	L m/m	R m/m	P m/m
3404 0048 98 0	22.5	37.65			
3404 0048 99 0	22	40			
3404 0049 01 0			72		
3404 0049 02 0	25.4	43.64		33.34	52.78
3404 0049 03 0	(1),23.8(2),25.40	43.64		33.34	44.86
3404 0049 04 0	26	(2)43.64	(1)61.20		
3404 0049 05 0	20	46.6			
3404 0049 06 0	25	38.1			
3404 0049 07 0	25	44			
3404 0049 08 0	25		63.8		
3404 0049 09 0	25	43.6			
3404 0049 10 0	25.4	43.64			
3404 0049 11 0	25.4	43.64			
3404 0049 12 0	26.99	46.04			
3404 0049 13 0	26	48.2			
3404 0049 14 0	25	42.9			
3404 0049 15 0	23	49			
3404 0049 16 0	(1),25.4(2),25.58	(1)(2)59.53			
3404 0049 17 0	26	55.96			
3404 0049 18 0	28	59.1			
3404 0049 19 0	26.99	60.32	81.76		
3404 0049 20 0	28	55.96			
3404 0049 21 0	(1),27.38(2),28.58	(1)54.00(2)60.32	81.76		
3404 0049 22 0	2 5 g	59.53			
3404 0049 23 0	2 5 g	59.53			
3404 0049 24 0	(1),25.4(2),26.99	59.53	(2)81.76		
3404 0049 25 0	2 CD §	53.1			
3404 0049 26 0	(1),25.4(2),28.58	59.53	(2)81.76		
3404 0049 27 0	E w 8	54			
3404 0049 28 0	(1),26.99(2),28.58	60.32	(1)(2)81.76		
3404 0049 29 0		56			
3404 0049 30 0		32	64		
3404 0049 31 0		32	64		
3404 0049 32 0		25	60.4	76.5	
3404 0049 33 0		26.3	65.4		
3404 0049 34 0		28.55			



www.sorl.cn



www.sorl.cn

### FOR U.S. AND EUROPEAN VEHICLES IDENTIFICATION

SORL No.	D m/m	O m/m	L m/m	R m/m	P m/m
3404 0049 35 0	29	52			
3404 0049 36 0	29	49			
3404 0049 37 0	29	52			
3404 0049 38 0	28.58	59.53		36.52	87.32
3404 0049 39 0	28.58	59.53		36.52	87.32
3404 0049 40 0	(1)26.99(2)28.58	(7) 59.53	(1)81.76		
3404 0049 41 0	28.6	66.1			
3404 0049 42 0	(1)26.99(2)28.58	(1)70.00	(7) 92.08		
3404 0049 43 0	(1)23.90.16	(1)65.10	(2)92.08		
3404 0049 44 0	26.99	70	92.08		
3404 0049 45 0	32	59.95			
3404 0049 46 0	34	56			
3404 0049 47 0	30	57.6			
3404 0049 48 0	32	68			
3404 0049 49 0	28.58	82.55			
3404 0049 50 0	28.58	82.55		36.52	87.32
3404 0049 51 0	25.58	82.55		36.52	87.32
3404 0049 52 0	31.35	76.2			
3404 0049 53 0	30.16	76.2	106.35		
3404 0049 54 0	37	71			

### AGRICULTURAL UNIVERSAL JOINT KITS CONVERSION AND SIZE LISTING EUROPEAN IMPLEMENTS

SORL No.	FIG	D m/m	O m/m	L m/m	D2 m/m	L <sub>2</sub> m/m
3404 0021 23 0	A4	18		47		
3404 0021 34 0	A4	19.04		51.95		
3404 0021 36 0	A4	22		54		
3404 0021 37 0	A4	22		54.8		
3404 0021 38 0	A4	23.82		61.3		
3404 0021 39 0	A4	24.98		72.1		
3404 0021 40 0	A4	27		70		
3404 0021 41 0	A4	27		74.3		
3404 0021 42 0	A4	29		80		
3404 0021 24 0	A4	30		81.7		
3404 0021 25 0	A4	32.2		80		
3404 0021 26 0	A4	30.18		92.05		
3404 0021 27 0	A4	30.18		106.3		
3404 0021 28 0	A4	32		75.9		
3404 0021 29 0	A4	34	51.3			
3404 0021 30 0	A4	34		16.58		
3404 0021 31 0	A4	34.92		106.3		
3404 0021 32 0	A4	39.68		115.95		
3404 0021 33 0	A4	34.92		106.5		
3404 0021 35 0	A4	36		88.9		
3404 0018 19 0	A1	41		118		
3404 0027 01 0	C4	23.82		91	27	74.6
3404 0027 02 0	C4	27		94	32	76
3404 0027 03 0	C4	22		77	23.82	61.2

### AGRICULTURAL UNIVERSAL JOINT KITS CONVERSION AND SIZE LISTING U.S. IMPLEMENTS

SORL No.	DIMENSION DX (incl. U.S. SPICERNO.)	ROCKWELL No.	GMB No.
3404 0049 55 0	24.610x33.000	CPL6N-8	GGPL-6R
3404 0049 56 0	58.800x150.830	CPL7N	GGPL-7R
3404 0049 57 0	22.220x61.930	CPL10N	GGPL-10R
3404 0049 58 0	27.020x42.000	CPL12N	GGPL-12R
3404 0049 59 0	28.600 x 66.650	CPL14N	GGPL-14R
3404 0049 60 0	31.800x81.596	CP35N2	GGPL-35R
3404 0049 61 0	33.280 x 67.500	CP44R	GGPL-44R
3404 0049 62 0	38.910x109.400	CP55R	GGPL-55R

### FOR U.S. AND EUROPEAN VEHICLES CONVERSION LISTING FORD

FORD.No.	SORL No.
(DANN-4N167-A)	3404 0018 06 0
A9LY-4635	3404 0047 23 0
A9LY-4635-A	3404 0047 23 0
B-4635-A	3404 0018 06 0
B2TZ-4635-A	3404 0029 01 0
B3TZ-4635-A	3404 0048 66 0
B3TZ-4635-B	3404 0048 66 0
B4TZ-4635-F	3404 0047 27 0
B5TZ-4635-A	3404 0047 36 0
B6TZ-4635	3404 0018 06 0
B6TZ-4635-A	3404 0018 01 0
B6TZ-4635-B	3404 0018 06 0
B7TZ-4635-A	3404 0018 01 0
C1AZ-4635-C	3404 0047 99 0
C1TZ-4635-A	3404 0047 53 0
C1TZ-4635-B	3404 0047 27 0
C3AA-4635-A	3404 0047 99 0
C3AZ-4635-A	3404 0047 99 0
C3AZ-4635-A	3404 0047 99 0
C3AZ-4635-A	3404 0047 99 0
C3AZ-4635-G	3404 0048 03 0
C3AZ-4635-L	3404 0048 03 0
C3SZ-4635-A	3404 0047 99 0
C3UZ-4635-B	3404 0025 02 0
C4SZ-4635-A	3404 0047 26 0
C4TZ-4635-A	3404 0018 01 0
C4TZ-4635-A	3404 0018 01 0
C5TZ-4635-B	3404 0048 06 0
C5TZ-4635-C	3404 0018 01 0
C5TZ-4635-D	3404 0018 01 0
C5TZ-4635-E	3404 0018 07 0
C5TZ-4635-F	3404 0047 27 0
C5UZ-4635-A	3404 0025 02 0
C5UZ-4635-B	3404 0025 02 0

FORD.No.	SORL No.
C6TZ-4365	3404 0029 02 0
C6TZ-4365-F	3404 0029 04 0
C6TZ-4365-G	3404 0029 02 0
C8TZ-4365-A	3404 0049 63 0
C9TZ-4365-A	3404 0049 63 0
C9TZ-4365-B	3404 0018 01 0
C9TZ-4365-A	3404 0018 01 0
D3TZ-4365-A	3404 0029 02 0
D3TZ-4365-B	3404 0029 04 0
D9HZ-4365-A	3404 0048 49 0
D90Z-4365-A	3404 0023 07 0
E3TZ-4365-B	3404 0020 04 0
E7TZ-4365-B	3404 0023 07 0
E9TT-4724-A	3404 0047 27 0
C1AA-4724-A	3404 0047 99 0
C4TA-4724-A	3404 0018 01 0
CIVV-4997-A	3404 0018 01 0
V3VY-4997-A	3404 0047 42 0
AOT-7039-A	3404 0018 07 0
A80-7039-A	3404 0029 01 0
B20-7039-A	3404 0029 01 0
B5T-7039-A	3404 0018 07 0
B6D-7039-A	3404 0047 23 0
4487436	3404 0018 01 0
4050350	3404 0018 01 0
B65-7039-A	3404 0018 01 0
B6T-7039-A	3404 0018 06 0
B7A-7039-A	3404 0018 01 0
B75-7039-A	3404 0018 01 0
MFK-7039	3404 0018 01 0
MFK-7039-A	3404 0047 99 0
IT-7039	3404 0018 07 0
IY-7039	3404 0018 01 0
7EO-7039	3404 0029 01 0